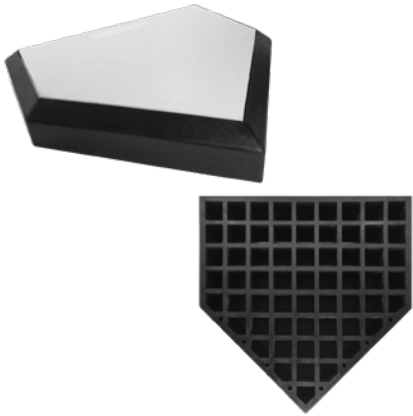


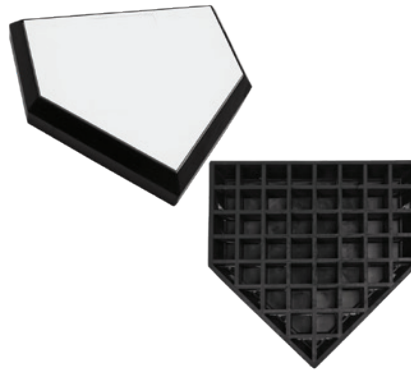


# PRO BURY ALL IN-GROUND HOME PLATE

Compatible with BH85 / BH86 / BH88. Each model sold separately.



TOP AND BOTTOM VIEW  
BH85



TOP AND BOTTOM VIEW  
BH86



TOP AND BOTTOM VIEW  
BH88

## Features:

- Heavy-duty rubber construction
- Non-skid surface
- UV-resistant material
- Smooth beveled edges
- Designed for permanent in-ground installation

## Instructions:

1. On level ground, dig a hole larger than the size of the base and as deep as the base. Level out the bottom of the hole. Figure 1.
2. Place the base in the hole, adjusting it to ensure it is level with the ground surface. Figure 2.
3. Pack dirt or infield mix firmly around the base if necessary. Figure 3.
4. Do not allow the base edges to be exposed, angled or installed on uneven ground. Figure 4.

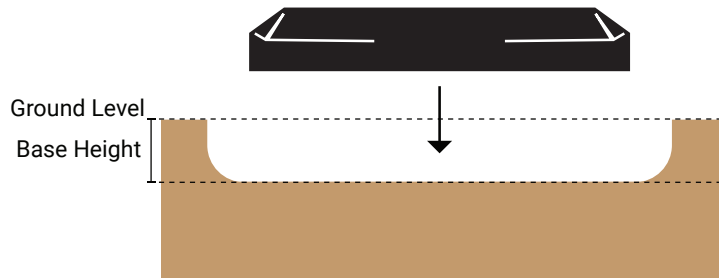


FIGURE 1



FIGURE 2

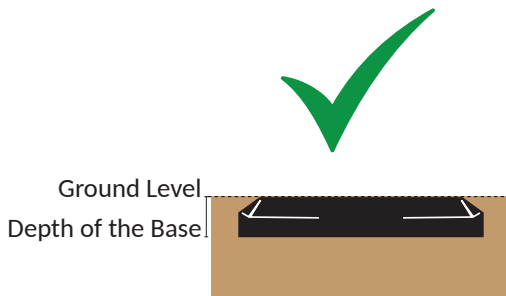


FIGURE 3



FIGURE 4